



## Officers

### President

Andy Butler  
512 321-1308

[butler@mdanderson.org](mailto:butler@mdanderson.org)

### Vice President

Alvin Cearley  
512 237-3021

[acearley@starband.net](mailto:acearley@starband.net)

### Secretary

Kathy McAleese  
512 321-2857

[kmcaleese@austin.rr.com](mailto:kmcaleese@austin.rr.com)

### Treasurer

Marie Medrano  
512 360-4172

[mmedrano@smithvilleisd.org](mailto:mmedrano@smithvilleisd.org)

### Past President

Elaine Cearley  
512 237-3021

[elainea@starband.net](mailto:elainea@starband.net)

### State Representative

Michal Hubbard  
512 303-5976

[michal@thecorporatecamera.com](mailto:michal@thecorporatecamera.com)

## President's Column

-Andy Butler

I'd like to start by welcoming our 2007 class into the Master Naturalist program. We have 29 people taking our introductory class this year, and several have begun volunteer activities already. If you get a chance, come to one of the classes or field trips to get to know this group. You can see a class schedule on our web site, at [http://www.lostpinemasternaturalist.org/files/Preliminary\\_LPMN07\\_class.pdf](http://www.lostpinemasternaturalist.org/files/Preliminary_LPMN07_class.pdf). We're looking forward to many of our usual instructors, such as Barron Rector on September 10 and Troy Kimmel on October 8. We do have some new people on the program as well, including our own Alvin Cearley and Mark McClelland on September 24 (taxonomy and plant ID) and TPWD's Mike Quinn, for entomology, on October 1.

Please also mark your calendars for our fall chapter meetings. Our next meeting will be September 17, 6:30 PM at Red Rock Community Center. This will be primarily a business and planning meeting (chapter development). We need to begin planning for fall and winter programs and projects, so bring your ideas! We will also have a short presentation concerning the Bastrop Nature Fest on November 3, which will coincide with the inauguration of the Colorado River paddling trail, and our potential volunteer activities at this event. At the October 15 meeting at Bastrop State Park we will have an advanced training presentation by Chad Norris, TPWD, on Aquatic Ecology of Texas Springs. Our November 19 chapter meeting will be at Lockhart, and we are planning another advanced training presentation (TBA).

Labor Day marks the traditional end of summer. We know that in Texas, we still have quite a bit of summery weather left until the mythical fall season arrives. Still, it's time to start watching fall migrations. Hummingbirds will be migrating through during late September, so look for migratory species at your feeders or in your native plant gardens.

Speaking of native plants, we've had a request from the Friends of the Bastrop Library to help them plan and implement a native/xeriscape garden adjacent to the library. This could be a long-term project with good public visibility. As a first step, a committee is being formed to prepare a plan for the space and a strategy for implementing and maintaining the garden. For further information and to volunteer, contact Ruth Toovey at 512-237-9461.

If you are looking for advanced training, there will be lots at the TMN state meeting in San Antonio (Oct 12-14). On-line registration is available at <http://tti.tamu.edu/conferences/find.htm>. This is a great venue to learn and get to know naturalists from around the state. In addition, the state meeting will have a project fair. Louise Ridlon has agreed to assemble a display for our chapter, dealing with the Lockhart outdoor science lab project. If anyone has photos from this project or wants to help in other ways, contact Louise ([flridlon@hotmail.com](mailto:flridlon@hotmail.com)). There will also be an individual photo contest at the state meeting, so check the registration information for the rules on that. And if any of you have photos you'd just like to

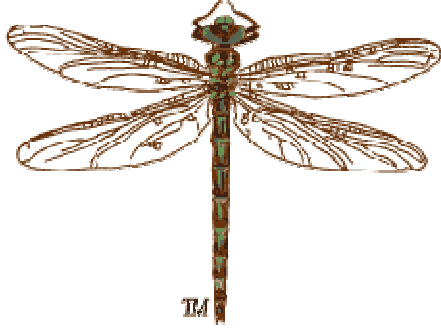
—Continued on Page 4

## Inside This Issue

- 1 President's Column
- 2 Chapter Calendar
- 3 Volunteer Opportunities
- 3 Nature Quotes
- 4 Advanced Training
- 4 A Murder of Crows

## MISSION STATEMENT

To develop a corps of well-informed volunteers to provide education, outreach, and service dedicated to the beneficial management of natural resources and natural areas within their communities.



## STATE PROGRAM CONTACTS

Website: <http://masternaturalist.tamu.edu>

State Coordinator: Michelle Haggerty,  
[mhaggerty@wfscgate.tamu.edu](mailto:mhaggerty@wfscgate.tamu.edu); 979 458-2034.

The Texas Master Naturalist program is sponsored by the Texas Cooperative Extension Agency and by Texas Parks and Wildlife Department.

## SPONSOR CONTACTS

**Caldwell Co. Extension Office:** Rachel Bauer, CEA-AG/NR; [Caldwell-tx@tamu.edu](mailto:Caldwell-tx@tamu.edu); 512 398-3122

**Bastrop Co. Extension Office:** Maron Finley, CEA-AG/NR; [Bastrop-tx@tamu.edu](mailto:Bastrop-tx@tamu.edu); 512 581-7186

**Bastrop/Caldwell Co. TPWD Wildlife Biologist:** Meredith Longoria, 804 Pecan, Bastrop, [mltpwd@onr.com](mailto:mltpwd@onr.com); 512 332-7280.



## Newsletter Deadline

Deadline for the next issue is **Sept 7, 2007**. We welcome relevant contributions, photos, announcements, or other material relating to the mission of the Texas Master Naturalist program, particularly those pertaining to our local area. Please send information to Marsha Elrod: [melrod1@earthlink.net](mailto:melrod1@earthlink.net) 512 321-7400.

# CHAPTER CALENDAR

Chapter meetings alternate between Bastrop State Park's Refectory and the Red Rock Community Center and are normally held at 6:30 PM on the third Monday of each month. Meetings are open to members, prospective members, and the general public.

## September

**Monday, Sept 17 - Chapter Meeting:** Red Rock Community Center, 6:30 PM. This will be a business and planning meeting for fall and winter projects. Unlike most of our regular meetings, this will count as volunteer time for chapter development.

## October

**Monday, Oct 15 - Chapter Meeting:** Bastrop State Park Refectory, 6:30 PM. Chapter meeting and advanced training session by Chad Norris, aquatic biologist with TPWD.

## CHAPTER WEBSITE

[www.lostpinesmasternaturalist.org](http://www.lostpinesmasternaturalist.org)

Please check our website for updated event information and for links to many resources about our region's natural history.

## LOST PINES CHAPTER YAHOO GROUP

Subscribe to our Yahoo Group to keep up with the latest Chapter happenings. Send an email to [LPMN-subscribe@yahoogroups.com](mailto:LPMN-subscribe@yahoogroups.com) or log on to <http://groups.yahoo.com/group/LPMN/>.

## REPORTING TRAINING & VOLUNTEER HOURS

Send your advanced training and volunteer hours reports to Marsha Elrod: [melrod1@earthlink.net](mailto:melrod1@earthlink.net) or mail to

187 Billingsley Hts  
Cedar Creek TX 78612

# Volunteer Opportunities

- **Colorado River Refuge First Saturday/Sunday Monitoring** – Kathy McAleese leads monthly bird and plant monitoring surveys (and now, butterflies) at the Colorado River Refuge. Time and day may vary from month to month, due to weather or other scheduling conflicts. Also, surveys may alternate between Saturday and Sunday to allow for more overall participation. The next survey is scheduled for **SUNDAY, Oct 7** from 9:00-11:00, or so. Bring binoculars, field guides, and water; dress for the weather. The CRR is located in Tahitian Village past the Pine Forest Golf Course clubhouse 0.7 miles beyond where the pavement ends. Contact Kathy at 512 718-1313 or [kmcaleese@austin.rr.com](mailto:kmcaleese@austin.rr.com) for more information.
- **Bastrop State Park Interpretive Hikes** – Ongoing, Saturday mornings, 10:00 AM. "Discover the Lost Pines" interpretive hikes at Bastrop State Park. Hikes start again in October. To help, contact Sue Fischer at 512 321-1308 or email [smfischer@mdanderson.org](mailto:smfischer@mdanderson.org).
- **Bastrop State Park Nature Surveys** – Louise Ridlon is coordinating nature surveys at Bastrop State Park. Surveys can be done ad hoc on your own schedule, or contact Louise to coordinate a group hike. Contact her at 512 985-5064 or [flridlon@hotmail.com](mailto:flridlon@hotmail.com) for how to report your findings if you would like to participate. Reporting forms are available on the chapter website and Yahoo group site.
- **Bastrop Library Xeriscape/Native Plant Garden** – Volunteers are needed to help the Friends of the Bastrop Library plan and implement a native, xeriscape garden adjacent to the Bastrop Library. As a first step, a committee is being formed to prepare a plan for the space and a strategy for implementing and maintaining the garden. For further information and to volunteer, contact Ruth Toovey at 512 237-9461.
- **Adopt A Highway** – Brett Finch, a member of our training class, has volunteered to lead an Adopt A Highway project for our chapter. Current plans are to adopt a 2 mile section of FM 1441 just off of Hwy 21. For details and to volunteer, contact Brett at [goldward@yahoo.com](mailto:goldward@yahoo.com).
- **McKinney Roughs** – The Roughs is looking for people to help weed and clean up the natural plant areas and beds around the visitor center, classroom building, dining hall, and parking lots, which need continuous maintenance. The demonstration trail and herb garden area are also being worked on. There are several ponds that need to have vegetation restored and bank work. Hiking and equestrian trails need periodic clean up and maintenance, particularly following bad weather. Assistance in any of these areas can be coordinated to work with volunteers' schedules during the hours the park is open: 8:00-5:00 Mondays through Saturdays and noon to 5:00 on Sundays. They do require volunteer forms be filled out, and a background check is

done on each volunteer before they start. To volunteer contact Jana Hellbusch at 800-776-5272, ext. 8041, 512-303-5073, fax 512-303-5277, or [jana.hellbusch@lcra.org](mailto:jana.hellbusch@lcra.org)

- **Friends of the Yegua Knobs** – Pines and Prairies Land Trust is starting a "Friends" group for the Yegua Knobs preserve. Volunteers are needed to survey plant and animal life, identify and clear camping areas and trails, plus other fun and rewarding tasks. Go to <http://www.pinesandprairieslandtrust.org/> for more information on Yegua Knobs. To volunteer, contact Jeremiah Jarvis at 512 281-2762 or [jifrog@flash.net](mailto:jifrog@flash.net).
- **Texas Parks and Wildlife Expo** – Sat and Sun, Oct 6 and 7. Volunteers are needed to staff 4 stations (6 per station) at the Expo in staggered 4-hour shifts (2 from 8:00 to noon, 1 from 10:00 to 2:00, 1 from noon to 4:00, and 2 from 2:00 to 6:00) between 8:00 AM and 6:00 PM each day. The stations include exhibits on wildscapes, hummingbirds, and backyard habitat, plus a children's area with nature games and prizes. Volunteers will receive an Expo T-shirt. Contact Mark Klym at [mark.klym@tpwd.state.tx.us](mailto:mark.klym@tpwd.state.tx.us) to advise him of your area, day, and shift preferences, shirt size, any special needs, and any special skills (Spanish would be ESPECIALLY helpful). Mark may also need volunteers to help at the literature and sales tables.
- **Hornsby Bend Monthly Bird Survey** – 2<sup>nd</sup> Sat, 7:00 and 4:00. All levels of birders are welcome. The survey is a great way to improve your skills since teams are formed matching experienced and novice birders. For more information see <http://www.hornsbybend.org/> or contact Eric Carpenter at [ecarpe@gmail.com](mailto:ecarpe@gmail.com).

## Nature Quotes

I remember a hundred lovely lakes, and recall the fragrant breath of pine and fir and cedar and poplar trees. The trail has strung upon it, as upon a thread of silk, opalescent dawns and saffron sunsets. It has given me blessed release from care and worry and the troubled thinking of our modern day. It has been a return to the primitive and the peaceful. Whenever the pressure of our complex city life thins my blood and benumbs my brain, I seek relief in the trail; and when I hear the coyote wailing to the yellow dawn, my cares fall from me - I am happy.

~Hamlin Garland, *McClure's*, February 1899

# Advanced Training

- **Lady Bird Johnson Wildflower Center: Go Native U** – Go Native U is a new, informal, education program designed to teach adults about the use and conservation of native plants. All classes will be held at the Wildflower Center. Registration for Go Native U is arranged on-line through the UT at Austin Informal Classes. See <http://www.wildflower.org/gonativeu/> for detailed registration information. Upcoming classes:

**Certification in Native Plant Gardening** – Sat's Sept 1 – Oct 6, 10:00-1:00 or 2:00-5:00. Through a series of fun and interactive classes students learn about the benefits of gardening with native plants. Classes may be taken individually for those wanting to build on their current gardening skills or as a series for those pursuing a certificate of merit in native plant gardening. Sign up for the entire sequence of Go Native U courses and receive a 15% discount on your registration (General: \$230, UT & WFC: \$184). For a certificate of merit in native plant gardening, participants must complete the entire sequence of Go Native U classes. Course schedule is as follows:

Designing Your Native Plant Garden, Sept 1  
Native Plant Selection I, Sept 8  
Native Plant Selection II, Sept 15  
Native Garden Installation, Sept 22  
Native Garden Maintenance, Sept 29  
Pests 101, Oct 6

Individual sessions are \$45 for the general public, \$36 for Wildflower Center members. For additional information and registration instructions, see <http://www.wildflower.org/gonativeu/>

- **Bamberger Ranch: Land Stewardship Workshop** – Sat Sept 15, 8:30-4:30. A day on the Ranch with emphasis on "Stewardship" for the large or small landowner who wants to know how to improve land for all plant and animal species. \$100 per person; TMN's receive a 25% discount. For details see <http://www.bambergeranch.org/tours/#steward>.
- **Austin Butterfly Forum** – Mon Sept 24, 7:00 pm. Monthly meeting at Zilker Botanical Garden Center. "Spiders on Video," a program by Joe Lapp, spider enthusiast and nature educator, introducing the world of spiders. See what spiders do not only during the day, but also late at night. This video camera has night vision. For more information contact Mike Quinn at 512 577-0250 or [Mike.Quinn@tpwd.state.tx.us](mailto:Mike.Quinn@tpwd.state.tx.us)
- **Lost Pines Native Plant Society of Texas** – first Tuesday of each month, 7:00 PM (Learner's Corner at 6:30), First National Bank, Smithville. Presentations count as advanced training. Contact Alvin Cearley at [acearley@starband.net](mailto:acearley@starband.net) for program information.
- **Master Naturalist State Meeting** – Oct 10-12, San Antonio. On-line registration is now available at <http://tti.tamu.edu/conferences/tmn07/>. Early (discounted) registration ends Friday, **SEPTEMBER 14**.

Hotel reservations must also be made by **SEPTEMBER 14** in order to receive the special group rate. Mention group code TPWD when making your reservation. Complete registration information is also available at our chapter website.

- **McKinney Roughs: Forage Identification Workshop** – Mon Sept 17, 8:00-11:30. Guides will be available to help identify native plants and their wildlife value. A brush management component will be included to address control (chemical and mechanical) of common problem species in this area. No cost for registration, but RSVP to Meredith Longoria by Friday, Sept 14 at 512 332-7280 or [mltpwd@onr.com](mailto:mltpwd@onr.com), or to Maron Finley at [bastrop-tx@tamu.edu](mailto:bastrop-tx@tamu.edu).
- **McKinney Roughs: Ranger in the Roughs** – 3rd Thursday of each month from September 20 through February 21, 7:00-8:00 PM. Presentations are free and open to all ages. Nicholas Cowey will speak about the native animals that inhabit the land in and around the Colorado River, focusing on the natural and scientific history of one animal and its folklore per month. The schedule includes:
  - September - American bald eagle
  - October - Mexican free-tailed bat
  - November - White-tailed deer
  - December - Raccoon
  - January - American alligator
  - February - Nine-banded armadilloThese presentations will be held in the outdoor amphitheater. No registration is required. Call McKinney Roughs Nature Park at (512) 303-5073 or email [outdoorprograms@lcra.org](mailto:outdoorprograms@lcra.org) for additional information.

—President's Column, continued

share with the state, please send your .jpg images to me, and I will forward them on for use at the annual state meeting slide show (and perhaps in our chapter activities, as well). Please include a brief description of the photo.

See you all on the trail!

## A Murder of Crows

In keeping with fall migration and its sounds (that's a clue!), we're back to the birds this month. So, what is a group of...?

1. cormorants
2. grouse
3. woodcocks
4. woodpeckers

See below for answers!

1. gull 2. drumming 3. fall 4. galling